

Swimming In The Cultural Sea

"Do not conform any longer to the pattern of this world,"



Romans 12:2-3

"be transformed by the renewing of your mind."

CULTURAL WAVES AND CURRENTS

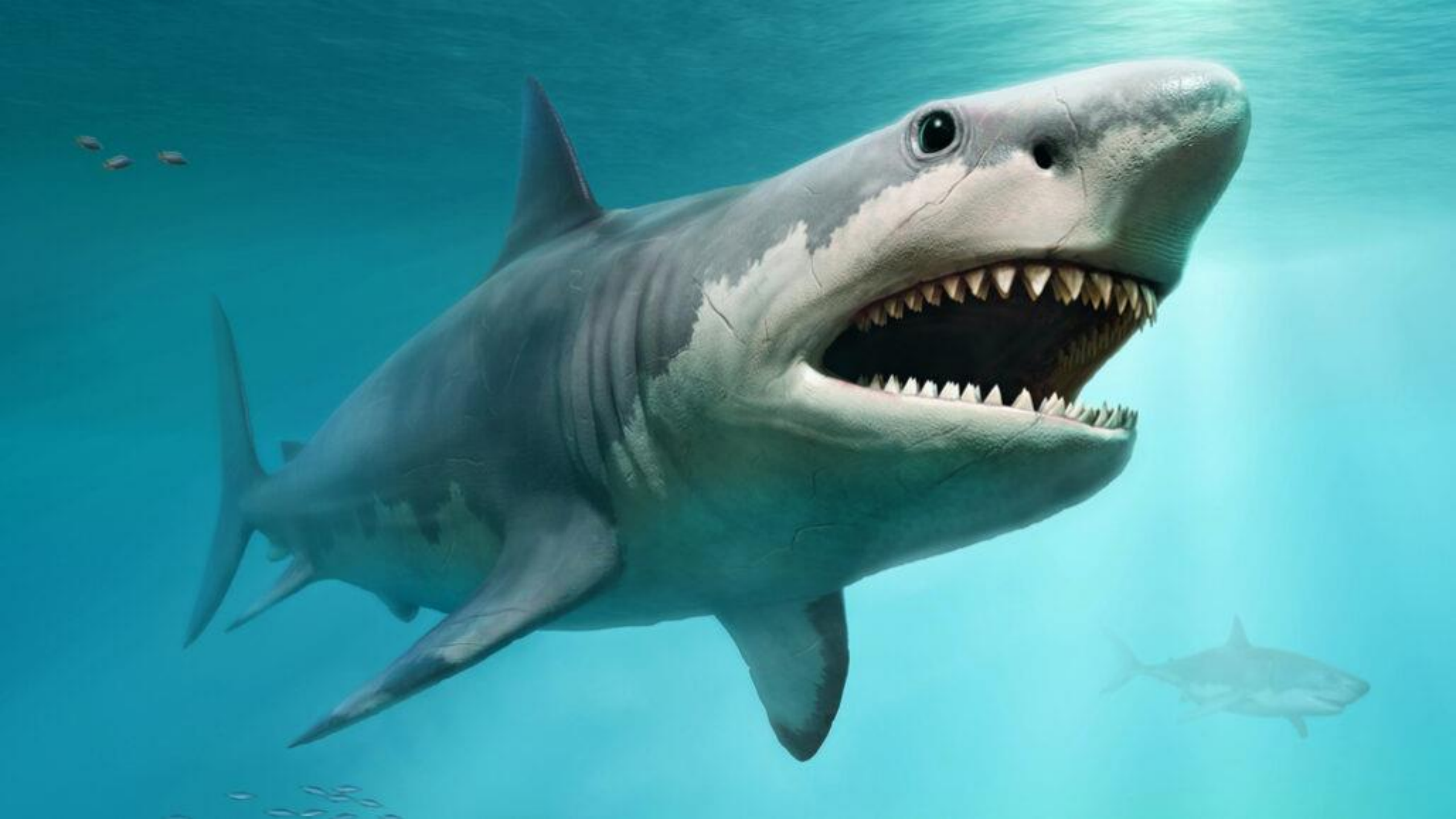
(WHY IT MATTERS)





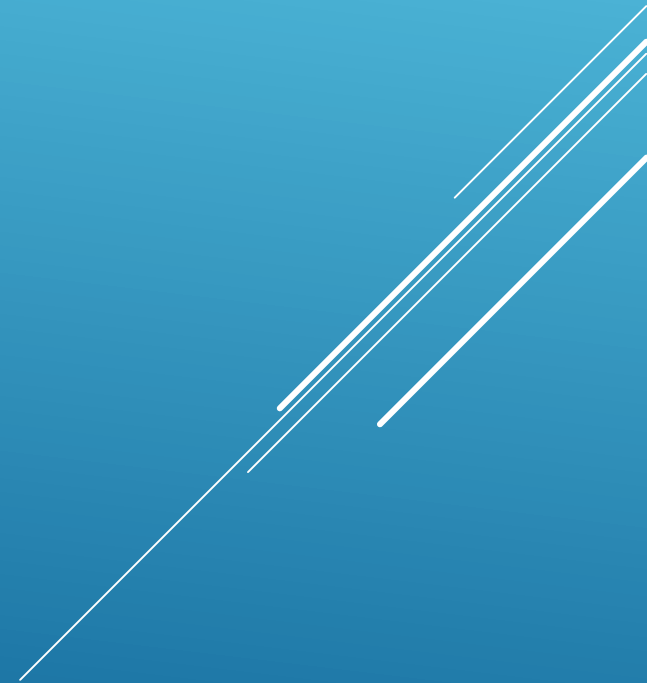








Culture = Accepted ideas, priorities and
expectations that direct our
choices and actions



Culture = The way things are, without
ever really thinking about it.



Culture:

- Not intrinsically bad
- Ours is poisoned by sin

Genesis 6:5

Several thin, parallel white lines of varying lengths and orientations are positioned in the bottom right corner of the slide, creating a modern, abstract graphic element.

How Do We As Christians Respond?

-Ephesians 4:12-15


-Romans 12:2

-John 17:13-18

Three parallel white lines of varying lengths are positioned in the bottom right corner of the slide, slanted upwards from left to right.

“to prepare God’s people for works of service, so that the body of Christ may be built up until we all reach unity in the faith and in the knowledge of the Son of God and become mature, attaining to the whole measure of the fullness of Christ.”

“Then we will no longer be infants,
tossed back and forth by the waves, and
blown here and there by every wind of
teaching and by the cunning and
craftiness of men in their deceitful
scheming,”

Three parallel white diagonal lines are located in the bottom right corner of the image, extending from the right edge towards the center.

“Instead, speaking the truth in love, we will in all things grow up into him who is the Head, that is, Christ.”


-Ephesians 4:12-15

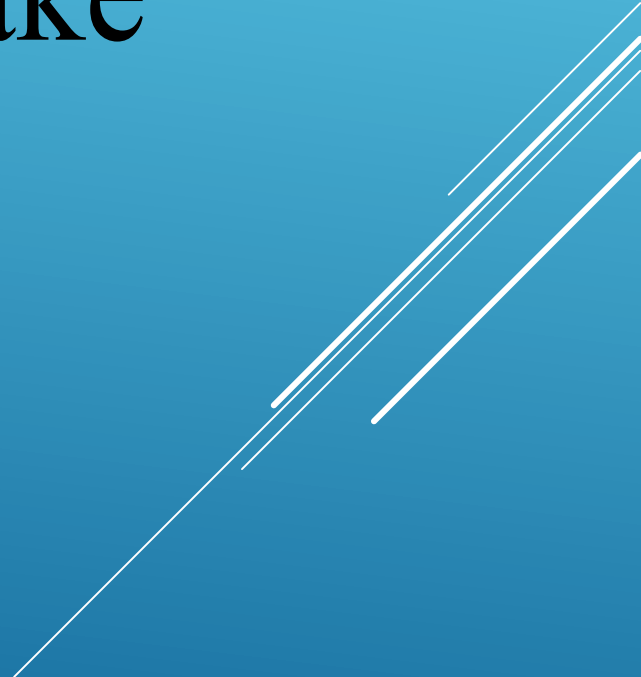
Three parallel white lines of varying lengths, slanted diagonally upwards from left to right, located in the bottom right corner of the image.

- we need each other
- different source of ideas
- gives needed strength
- reduces danger




“Do not conform any longer to the pattern of this world, but be transformed by the renewing of your mind. Then you will be able to test and approve what God’s will is – his good, pleasing and perfect will” *-Romans 12:2*


Three parallel white diagonal lines are located in the bottom right corner of the image, extending from the right edge towards the center.


- a need to resist
 - being different starts with what we think
 - there are better choices to make
- 
- A decorative graphic consisting of several parallel white lines of varying lengths, slanted diagonally upwards from left to right, located in the bottom right corner of the slide.

“I have given them your word and the world has hated them, for they are not of the world any more than I am of the world. My prayer is not that you take them out of the world but that you protect them from the evil one.”


Three parallel white diagonal lines are located in the bottom right corner of the image, extending from the right edge towards the center.

“They are not of the world, even as I am not of it. Sanctify them by the truth; your word is truth. As you sent me into the world, I have sent them into the world.” *-John 17:14-18*

Three parallel white lines of varying lengths are positioned in the bottom right corner of the image, slanted diagonally upwards from left to right.

- there is a way to live here well
 - world hates us because we are different
 - we're not leaving
 - we have an enemy here
 - we don't belong here
 - there is truth available to us
 - we have a mission here
- 
- Three parallel white diagonal lines are located in the bottom right corner of the slide, extending from the right edge towards the center.

Series: Cultural Currents and Waves

- Danger – lies our culture tells us
 - Protection – truth God tells us
 - Action Steps – what do we do about it
- 
- Three parallel white lines of varying lengths are positioned in the bottom right corner of the slide, slanted diagonally upwards from left to right.